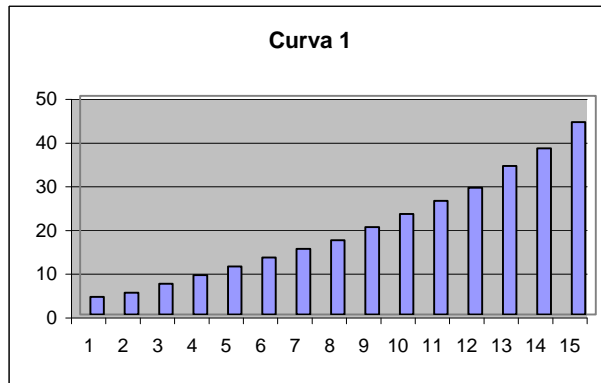


**Curva 1 off-off-off**

Recomendado para WRC, K y N con motores SCX y Team Slot

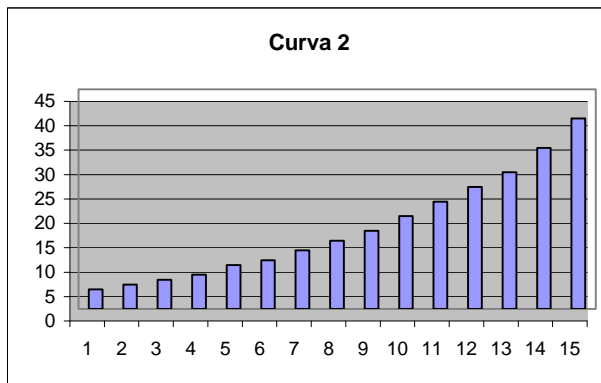
|        |    | Valor |
|--------|----|-------|
| Pos 1  | FC | 252   |
| Pos 2  | FB | 251   |
| Pos 3  | F9 | 249   |
| Pos 4  | F7 | 247   |
| Pos 5  | F5 | 245   |
| Pos 6  | F3 | 243   |
| Pos 7  | F1 | 241   |
| Pos 8  | EF | 239   |
| Pos 9  | EC | 236   |
| Pos 10 | E9 | 233   |
| Pos 11 | E6 | 230   |
| Pos 12 | E3 | 227   |
| Pos 13 | DE | 222   |
| Pos 14 | DA | 218   |
| Pos 15 | D4 | 212   |



**Curva 2 off-off-on**

Recomendado para WRC, K y N con motores SCX y Team Slot

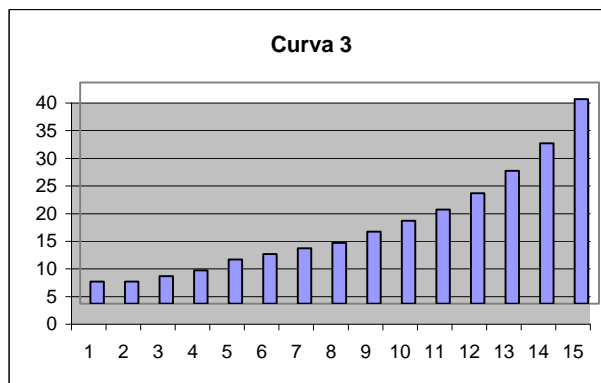
|        |    | Valor |
|--------|----|-------|
| Pos 1  | FC | 252   |
| Pos 2  | FB | 251   |
| Pos 3  | FA | 250   |
| Pos 4  | F9 | 249   |
| Pos 5  | F7 | 247   |
| Pos 6  | F6 | 246   |
| Pos 7  | F4 | 244   |
| Pos 8  | F2 | 242   |
| Pos 9  | F0 | 240   |
| Pos 10 | ED | 237   |
| Pos 11 | EA | 234   |
| Pos 12 | E7 | 231   |
| Pos 13 | E4 | 228   |
| Pos 14 | DF | 223   |
| Pos 15 | D9 | 217   |



**Curva 3 off-on-off**

Recomendado para N con motor NC

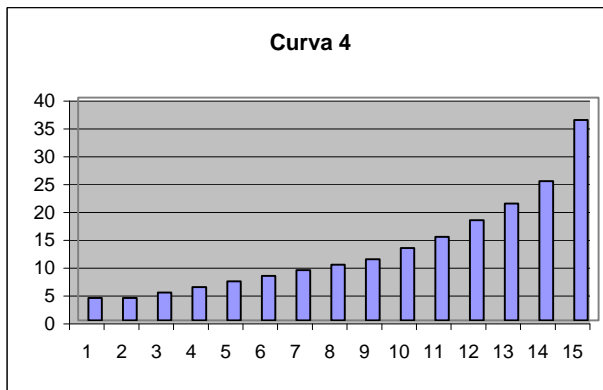
|        |    | Valor |
|--------|----|-------|
| Pos 1  | FC | 252   |
| Pos 2  | FC | 252   |
| Pos 3  | FB | 251   |
| Pos 4  | FA | 250   |
| Pos 5  | F8 | 248   |
| Pos 6  | F7 | 247   |
| Pos 7  | F6 | 246   |
| Pos 8  | F5 | 245   |
| Pos 9  | F3 | 243   |
| Pos 10 | F1 | 241   |
| Pos 11 | EF | 239   |
| Pos 12 | EC | 236   |
| Pos 13 | E8 | 232   |
| Pos 14 | E3 | 227   |
| Pos 15 | DB | 219   |



**Curva 4 off-on-on**

|        |    | Valor |
|--------|----|-------|
| Pos 1  | FC | 252   |
| Pos 2  | FC | 252   |
| Pos 3  | FB | 251   |
| Pos 4  | FA | 250   |
| Pos 5  | F9 | 249   |
| Pos 6  | F8 | 248   |
| Pos 7  | F7 | 247   |
| Pos 8  | F6 | 246   |
| Pos 9  | F5 | 245   |
| Pos 10 | F3 | 243   |
| Pos 11 | F1 | 241   |
| Pos 12 | EE | 238   |
| Pos 13 | EB | 235   |
| Pos 14 | E7 | 231   |
| Pos 15 | DC | 220   |

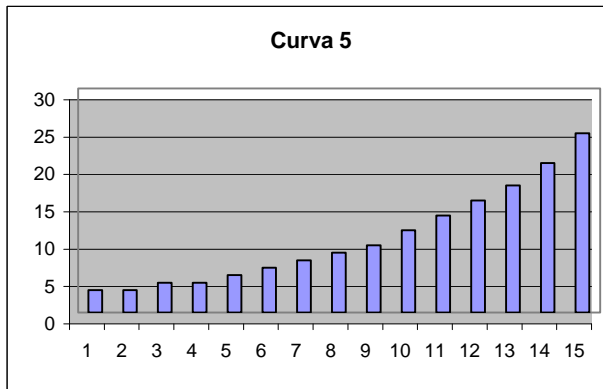
**Recomendado para N con motor NC**



**Curva 5 on-off-off**

|        |    | Valor |
|--------|----|-------|
| Pos 1  | FD | 253   |
| Pos 2  | FD | 253   |
| Pos 3  | FC | 252   |
| Pos 4  | FC | 252   |
| Pos 5  | FB | 251   |
| Pos 6  | FA | 250   |
| Pos 7  | F9 | 249   |
| Pos 8  | F8 | 248   |
| Pos 9  | F7 | 247   |
| Pos 10 | F5 | 245   |
| Pos 11 | F3 | 243   |
| Pos 12 | F1 | 241   |
| Pos 13 | EF | 239   |
| Pos 14 | EC | 236   |
| Pos 15 | E8 | 232   |

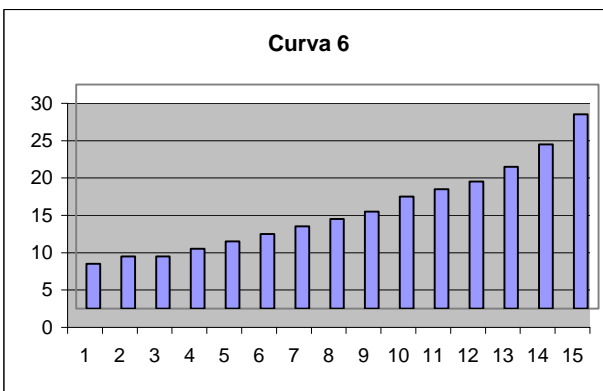
**Recomendado para N con motor NC**



**Curva 6 on-off-on**

|        |    | Valor |
|--------|----|-------|
| Pos 1  | FA | 250   |
| Pos 2  | F9 | 249   |
| Pos 3  | F9 | 249   |
| Pos 4  | F8 | 248   |
| Pos 5  | F7 | 247   |
| Pos 6  | F6 | 246   |
| Pos 7  | F5 | 245   |
| Pos 8  | F4 | 244   |
| Pos 9  | F3 | 243   |
| Pos 10 | F1 | 241   |
| Pos 11 | F0 | 240   |
| Pos 12 | EF | 239   |
| Pos 13 | ED | 237   |
| Pos 14 | EA | 234   |
| Pos 15 | E6 | 230   |

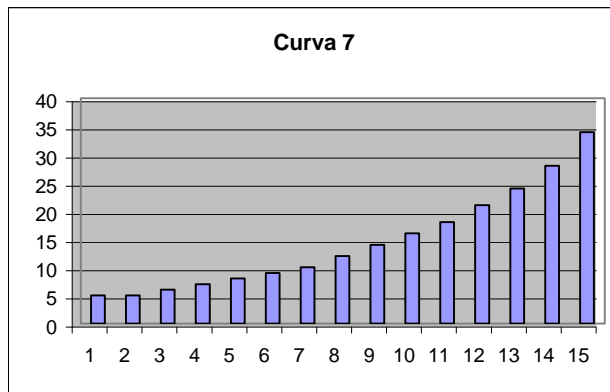
**Recomendado para N con motor SCX o Team Slot**



**Curva 7 on-on-off**

|        |    | Valor |
|--------|----|-------|
| Pos 1  | FB | 251   |
| Pos 2  | FB | 251   |
| Pos 3  | FA | 250   |
| Pos 4  | F9 | 249   |
| Pos 5  | F8 | 248   |
| Pos 6  | F7 | 247   |
| Pos 7  | F6 | 246   |
| Pos 8  | F4 | 244   |
| Pos 9  | F2 | 242   |
| Pos 10 | F0 | 240   |
| Pos 11 | EE | 238   |
| Pos 12 | EB | 235   |
| Pos 13 | E8 | 232   |
| Pos 14 | E4 | 228   |
| Pos 15 | DE | 222   |

**Recomendado para tramos con harina**



**Curva 8 on-on-on**

|        |    | Valor |
|--------|----|-------|
| Pos 1  | FB | 251   |
| Pos 2  | FB | 251   |
| Pos 3  | FA | 250   |
| Pos 4  | FA | 250   |
| Pos 5  | F9 | 249   |
| Pos 6  | F9 | 249   |
| Pos 7  | F8 | 248   |
| Pos 8  | F8 | 248   |
| Pos 9  | F7 | 247   |
| Pos 10 | F6 | 246   |
| Pos 11 | F4 | 244   |
| Pos 12 | F3 | 243   |
| Pos 13 | F1 | 241   |
| Pos 14 | EF | 239   |
| Pos 15 | EB | 235   |

**Recomendado para tramos con harina**

